

# VFC Series

## Variable Flow Pressure Compensated Control Valve

**Variable Flow Control Valves** maintain the flow rate of hydraulic fluid to a selected value.

Applications include hydraulic cylinders requiring constant extension or retraction speeds and hydraulic motors requiring constant rotational speeds. When used with a fixed delivery pump the excess flow is By-Passed across a relief valve.

### Specifications

**Maximum Pressure:**  
210 bar (working)

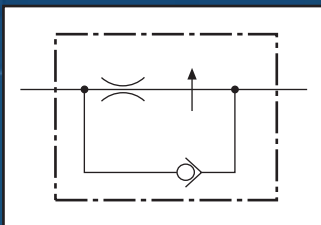
**Maximum Flow:**  
55 lpm

**Porting:**  
BSP & NPT (see Table 1)

**Material:**  
Steel components in an aluminium body

**Weight:**  
See Table 1

### Symbol



Manufacturers of hydraulic components and test equipment  
for the Mobile, Industrial and Agricultural industries



1290 E. Waterford Ave.

Milwaukee, WI 53235

Tel: (414) 769-6400

Fax: (414) 769-6591

www.webster-inst.com

E-mail: sales@webster-inst.com

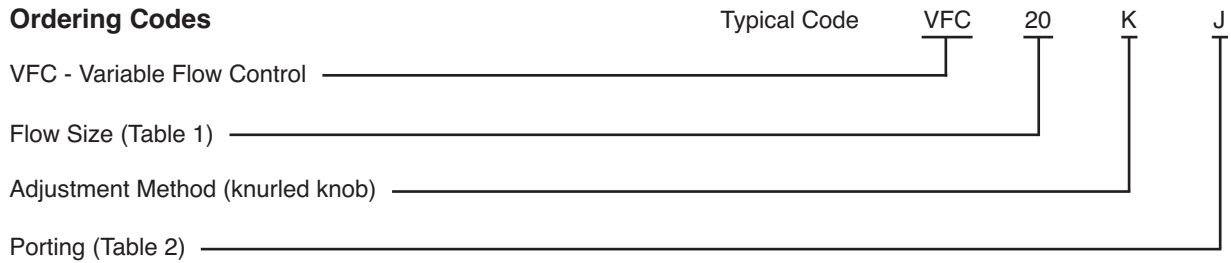
### Features

- Pressure compensated to ensure a constant flow rate under varying pressures.
- Knurled knob enables fast, accurate adjustment of flow rate in one direction (under pressure) from 1.5 lpm to 55 lpm.
- Knurled knob can be locked in position by a grub (set) screw and provides weatherproof sealing to prevent the adjusting screw from corroding or seizing.
- Free (uncontrolled) flow is permitted in reverse direction.
- Special, Uni-directional version available on request.



VFC-BU-USA-2593.pdf 08/10  
(Issue 2)

## Ordering Codes



**Table 1: Dimensions**

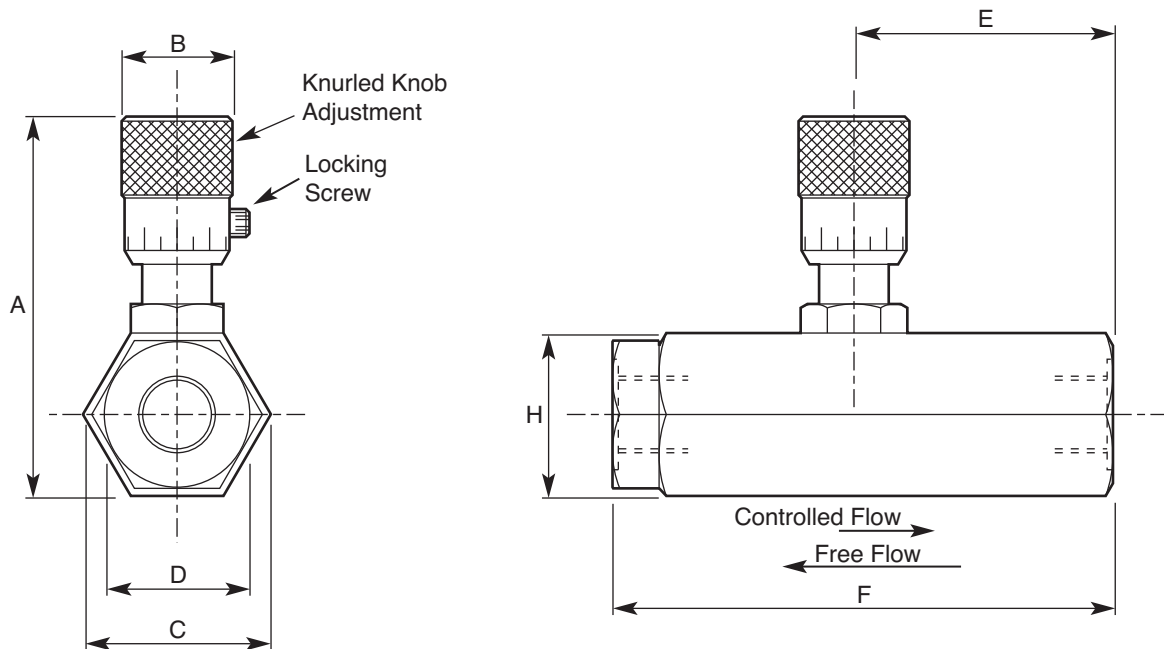
Code	Flow Range (lpm)	Porting		A	B	C	D	E	F	H	Weight (kg)
		Size	Thread								
20	1.5 - 20	1/4"	BSP	59.9	17.5	32.8	25.4	44.4	84.8	28.4	0.2
40	2.0 - 40	3/8"	BSP	74.6	23.8	43.9	35.1	57.1	107.1	38.1	0.4
55	2.0 - 55	1/2"	BSP	77.7	23.8	47.5	38.1	63.5	119.1	41.1	0.5
20	1.5 - 20	1/4"	NPT	59.9	17.5	32.8	25.4	44.4	84.8	28.4	0.2
40	2.0 - 40	3/8"	NPT	74.6	23.8	43.9	35.1	57.1	107.1	38.1	0.4
55	2.0 - 55	1/2"	NPT	77.7	23.8	47.5	38.1	63.5	119.1	41.1	0.5

**Table 2: Porting \***

Code	Thread
J	BSP
A	NPT

## Installation Details

Dimensions in millimetres



\* Other threads available to special order.



**APPROVED**