







WEBSTER INSTRUMENTS
(A DIVISION OF WEBTEC PRODUCTS)

Product Update

Welcome to the Winter 2004 Product Update from Webster Instruments. In this issue we are focusing on several products to make your life simpler when designing and maintaining your hydraulic circuits.

This update includes: -

-  **WEBTEC** CK2FV2V a new priority flow divider combined with internal check valve, anti-cavitation check or relief valve.
-  **WEBTEC** RFIK the latest design of low cost, all mechanical hydraulic test kit with free reverse flow.
-  **WEBTEC** NEW CT series turbine flow meters and TP200 temperature sensor with conditioned analog outputs.
-  **WEBTEC** FI & WP range of hydraulic & pneumatic flow monitors.

To find out more about any of the items mentioned or to request a full catalog, please call us Toll free: 1-800-932-8378 or email us on sales@webster-inst.com

Simplify your hydraulic circuits

New additions to the Webtec range of flow control valves is the CK2FV2V, RV2FV2V and AC2FV2V. This variable priority flow divider is available with either:

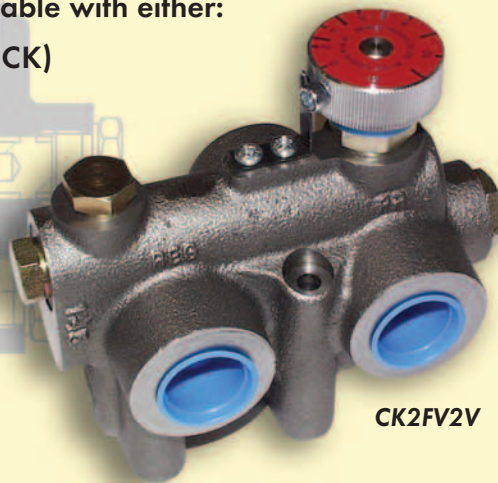
- Built-in reverse flow check valve (CK)
- Built-in relief valve (RV)

or

- Anti-cavitation check valve (AC)

The 2FV2V* valve is pressure compensated, permitting both 'priority' and 'by-pass' flows to be used simultaneously at varying pressures without affecting the 'priority' flow.

* By-pass must be returned to tank for AC2FV2V



CK2FV2V



CK2FV2V
Flow divider & built-in check valve



RFIK
Portable tester



CT
Turbine flow meter

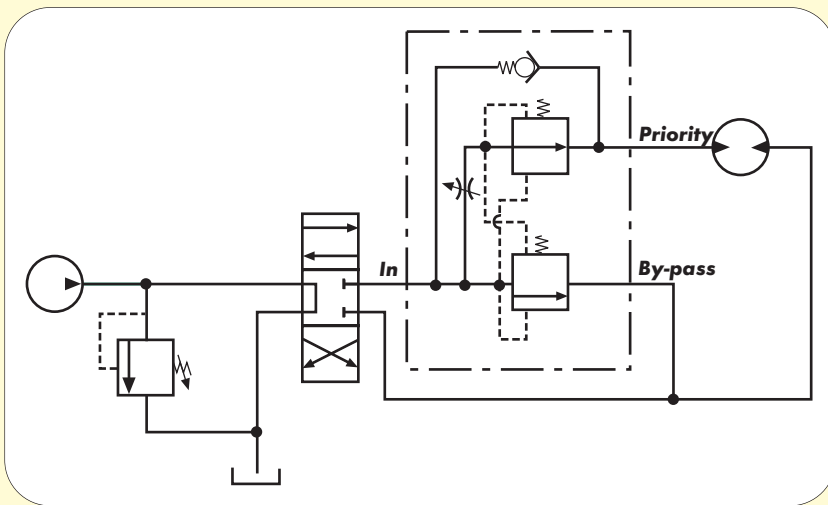


WP & FI Series
Flow monitors

Manufacturers of hydraulic components and test equipment for the mobile, industrial and agricultural industries

Continued from previous page

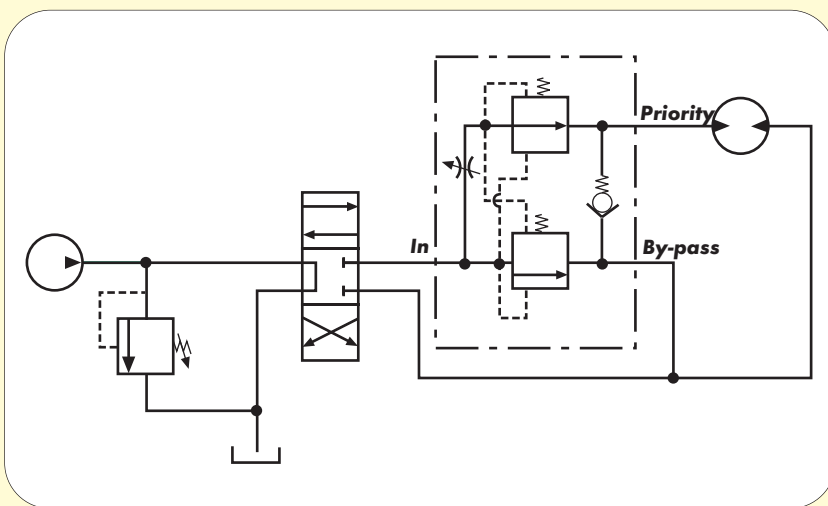
A typical application for the CK2FV2V



In this circuit a CK2FV2V is used with the built-in check valve between the priority and input ports. This allows flow to be reversed through the priority port of the valve back to the inlet. Typically used in conjunction with a directional control valve to control hydraulic motor direction and speed.

Available with remote electronic control of the priority flow.

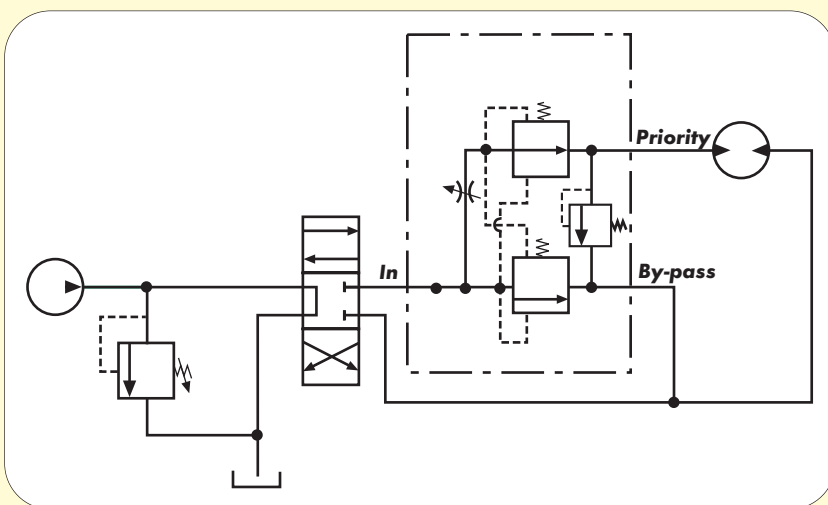
A typical application for the AC2FV2V



In this application the check valve is routed between the by-pass and priority ports, preventing cavitation on the motor inlet port under over-running load conditions.

Available with remote electronic control of the priority flow.

A typical application for the RV2FV2V



In this circuit the adjustable relief valve controls maximum pressure delivered to the priority circuit. The RV2FV2V relief valve dumps to the "bypass" circuit while the RVXD2FV2V model has an external drain port which requires a separate tank line.

Available with remote electronic control of the priority flow.

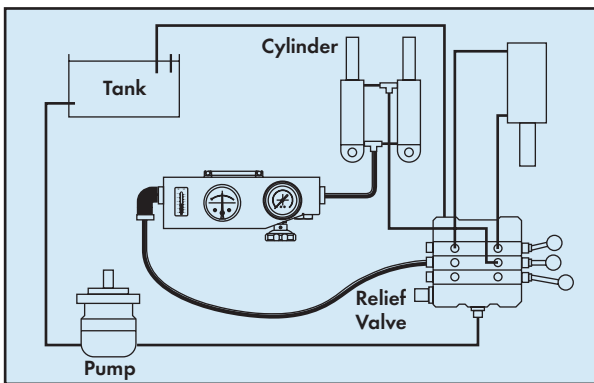
New Reversible Flow Indicator Kit (RFIK)

A rugged hydraulic tester with reverse flow capability for a very economical price. Mechanical design - no batteries required. Ideal for Attachments, Tractors, Turf Equipment and Hydraulic Tool Setup.

1. Install in-line and test motor or cylinder circuits avoiding potentially unsafe conditions.
2. Measure
 - Flows up to 50 gpm
 - Pressure up to 6000 psi
 - Temperature readings up to 180°F
3. Safely simulate machine operation using the built-in pressure loading valve with the exclusive "INTERPASS" safety disc system.



Install in-line



Specification

Model	Flow	Pressure	Temperature
RFIK 120 ASOT	1.5 - 32 gpm 5 - 120 lpm	0 - 6000 psi 0 - 420 bar	50 - 180°F 10 - 80°C
RFIK 180 ASOT	2 - 50 gpm 8 - 180 lpm	0 - 6000 psi 0 - 420 bar	50 - 180°F 10 - 80°C
Accuracy	± 4 % FSD (± 2% Under Calibration Conditions)	± 96 psi ± 6.7 bar	± 3.6°F ± 2°C

CT Turbine Flow Meters



Webster Instruments has introduced the latest addition to our product line, the CT series turbine flowmeters with conditioned analog outputs including: 4 - 20 mA, 0 - 5Vdc and 0 - 3Vdc. Conditioned outputs make interfacing flow meters with popular data acquisition or PLC hardware easier than before. The 0 - 3V model features sensor recognition making it compatible with the HPM series hand held readouts with auto calibration.

Also introduced is the new TP200 temperature sensor with 0 - 5 VDC or 4 - 20 mA output. Features temperature range of 32 - 300°F (0 - 150°C), pressure rating of 6900 psi, 1/4" NPT or #4 SAE male connection and an integral 6 foot cable make interfacing with data acquisition systems or PLC's quick & easy.



WEBSTER INSTRUMENTS
(A DIVISION OF WEBTEC PRODUCTS)

WEBSTER INSTRUMENTS
1290 E. WATERFORD AVE.
MILWAUKEE, WI 53235

PRSRT STD
US POSTAGE
PAID
MILWAUKEE, WI
PERMIT NO 2120

A wide range of versatile flow monitors



FI & WP series uni-directional flow monitors offer an economical solution for measuring fluid flow of oil, air, water, steam, caustics.

0.05 - 150 gpm 3500, 5000 & 6000 psi

Choose from a wide range of hydraulic and pneumatic flow rate monitors available in Stainless Steel, Aluminum or Brass.



For further information please use the enclosed reply card or contact us at the address shown below



WEBSTER INSTRUMENTS
(A DIVISION OF WEBTEC PRODUCTS)

1290 E. Waterford Ave. Milwaukee, WI 53235

Tel: 414-769-6400 Fax: 414-769-6591

Email: sales@webster-inst.com

See us at: www.webster-inst.com



Certificate No.8242

Webster Instruments, a Division of Webtec Products reserve the right to make improvements and changes to the specification without notice.