

# FDC 60 Series

## Flow Divider Combiner



1290 E. Waterford Ave.

Milwaukee, WI 53235

Tel: (414) 769-6400

Fax: (414) 769-6591

www.webster-inst.com

E-mail: sales@webster-inst.com

**A Flow Divider-Combiner** will divide a single flow into two separate flows which will always be in the same ratio to each other regardless of any pressure differential between the two lines. If the flow is reversed (e.g. return stroke of two cylinders) the return flows are held in the same ratio to each other and combined into a single flow, regardless of individual loads on the cylinders

A common application is to keep two cylinders (or motors) in close unison when loads on them are unequal. The valves may also be used in series to operate more than two circuits.

### Specifications

**Maximum Pressure:**

310 bar (working)

**Total Flow Capacity:**

70 lpm

**Porting:**

See Table 2, ordering codes

**Materials:**

Steel components in cast iron body

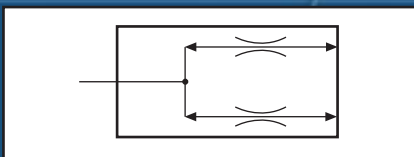
**Weight:**

2.05 kg

**Mounting:**

Three bolt

### Symbol



### Features

- Pressure compensated to keep the two divided flow rates at the same ratio regardless of pressure variations between them.
- Flow ratios are pre-set at factory from 50% - 50% up to 10% - 90%.
- Flow ranges are available from 5 lpm to 70 lpm.
- Cast iron/hardened steel construction (no aluminium) makes it suitable for mining applications.

Manufacturers of hydraulic components and test equipment  
for the Mobile, Industrial and Agricultural industries



FDC60-BU-USA-2529.pdf 08/10  
(Issue 2)

## Ordering Codes



**Table 1:** Recommended Flow Range

| Code | Flow Range  |
|------|-------------|
| 05   | 2 - 5 lpm   |
| 10   | 5 - 10 lpm  |
| 20   | 8 - 20 lpm  |
| 30   | 16 - 30 lpm |
| 40   | 25 - 40 lpm |
| 50   | 35 - 50 lpm |
| 60   | 45 - 60 lpm |
| 70   | 55 - 70 lpm |

**Table 3:** Divider Ratio

| A     | B   |
|-------|-----|
| 50%   | 50% |
| thru' |     |
| 10%   | 90% |

**Note:** Either outlet port (A or B) may be designated to take either leg of the ratios.

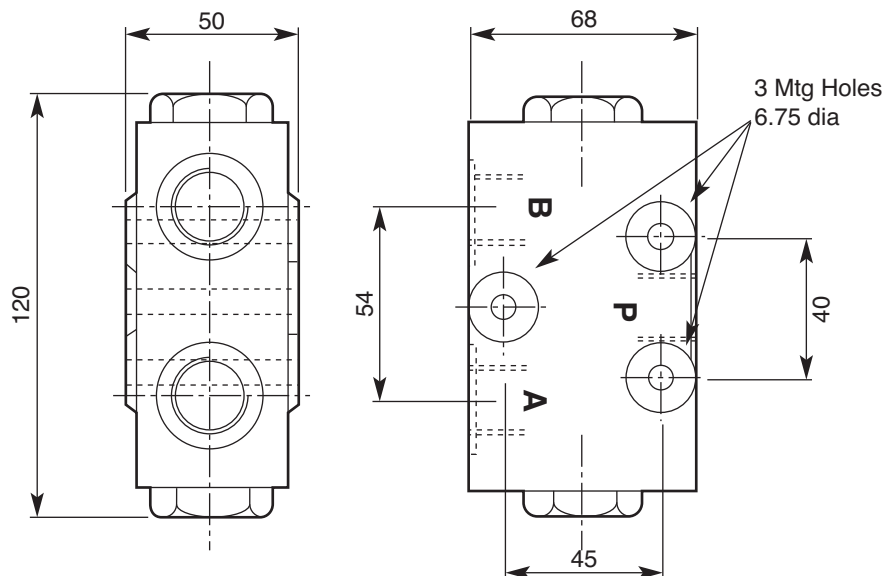
The example shown designates 40% at A and 60% at B. Any ratio from 50% - 50% to 90% - 10% may be specified.

**Table 2:** Porting (choose from following codes)

| Code | Port P                 | Port A                | Port B                |
|------|------------------------|-----------------------|-----------------------|
| 1    | M18 x 1.5              | M18 x 1.5             | M18 x 1.5             |
| 2    | M22 x 1.5              | M18 x 1.5             | M18 x 1.5             |
| 3    | 3/8" BSPP              | 3/8" BSPP             | 3/8" BSPP             |
| 4    | 1/2" BSPP              | 3/8" BSPP             | 3/8" BSPP             |
| 5    | 1/2" BSPP              | 1/2" BSPP             | 1/2" BSPP             |
| 6    | 7/8" -14UN #10 SAE ORB | 3/4" -16UN #8 SAE ORB | 3/4" -16UN #8 SAE ORB |
| 7    | M27 x 2                | M22 x 1.5             | M22 x 1.5             |
| 8    | 1/2" NPTF              | 1/2" NPTF             | 1/2" NPTF             |

## Installation Details

Dimensions in millimetres



\* Other threads available to special order.



APPROVED